

19.52 ACRES OF HUNTING & RECREATION LAND AUCTION

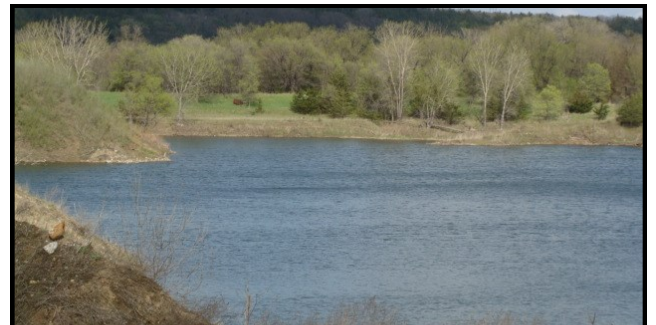
Tuesday, June 24, 2014- 4:30 P.M.

LOCATED: On Site - In case of bad weather listen to KLGR Radio



Directions: From Belview MN, go North on County Hwy 7, 5 miles to 430th Ave. Then East 1 mile to Grandview Ave. Then North approx. 1/4 mile to Y Intersection Continue North at Y to property. Watch for Kerkhoff Auction Signs

FOR MORE INFORMATION CONTACT
Doug Kerkhoff 507-829-6859 or
Valerie Stephens 507-640-2839
www.kerkhoffauction.com



Located in NW 1/4 of NW 1/4 Section 16
Swedes Forest Township, Redwood Co.

TERMS: Successful bidder is required to enter into a purchase agreement and pay a \$10,000 non-refundable down payment, the day of auction. Balance is due with certified funds on or before August 4, 2014, the date of closing. Land is being sold "AS IS". Real estate taxes on the 2014 tax statement will be paid by the seller and buyer will pay thereafter. Property is being sold with its current and existing legal description. If a survey is required by the buyer, it will be the sole expense of the buyer. All information is obtained from reliable sources, however, the auctioneers or agents do not accept responsibility for information presented, as it is the buyer's responsibility to verify all information.

DAVID & SUSAN JOHANNECK - OWNERS

AUCTIONEER: DOUG KERKHOFF



1500 E. Bridge Street
Redwood Falls, MN 56283
507-644-8433 Office



www.kerkhoffauction.com