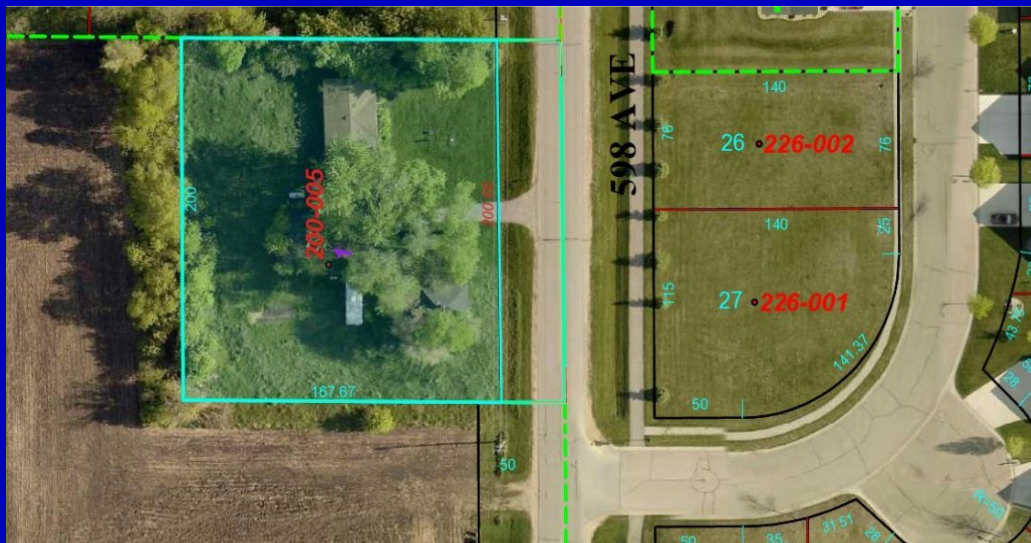


DEVELOPMENT LAND AUCTION

Thursday, August 31, 2017 - 5:00 p.m.

**Auction Location - On Site At
21570 598th St. Eagle Lake, MN**



FOR MORE INFORMATION

CONTACT:

DOUG KERKHOFF AT

507-829-6859 -Mobile

EMAIL:

Doug@KerkhoffAuction.com

ALSO AUCTIONING OFF
1998 DODGE RAM 1/2 TON
PICKUP - 4X4, AT
VEHICLE TRANSFER FEES
TO APPLY. BRING
INSURANCE INFO

Land is Located: Just North of Highway 14 and would make for ideal development
Watch for Kerkhoff Auction Signs!!

LAND INFORMATION

Legal - E 217.80' of N 200' 8" of N2 of NW4 of NE4 Section 13, TWP 108, Range 26. 1 Acre M/L
Recorded Legal to Govern Parcel # - R43.09.13.200.005

TERMS: PROPERTY IS BEING "SOLD AS IS" Successful bidder will be required to enter into a purchase agreement and pay a \$10,000 non-refundable down payment, the day of auction. Balance is due with certified funds on or before October 12, 2017 the date of closing. Possession on the date of closing. Real Estate Taxes on 2017 RE Tax statement shall be pro-rated to the date of closing. Buyer is responsible for any well or septic updates (if needed) and or removal of any remaining personal property. Sold subject to owner confirmation. All information is obtained from reliable sources, however, the auctioneers or agents do not accept responsibility for information presented, as it is the buyer's responsibility to verify all information. Announcements made on auction day take precedence over printed material.

ROBERT D PAGEL - OWNER

Lutheran Social Services of Minnesota Conservator



**1500 E. Bridge Street
Redwood Falls, MN 56283
Office 507-644-8433
Doug Kerkhoff
507-829-6859**

FOR MORE INFORMATION VISIT:

www.kerkhoffauction.com